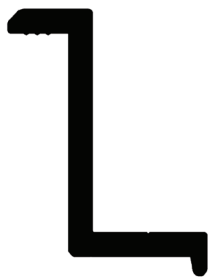


SWISSTEK SOLAR GROUND MOUNTING PROFILE DETAILS



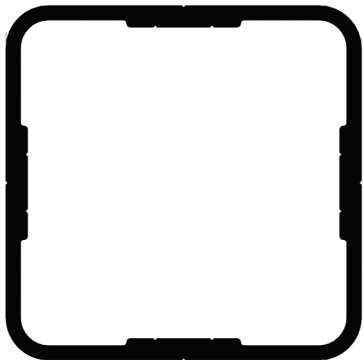
3,60 22,50
Profile Code - SM 5504
Linear Weight - 0.687 kg/m



Profile Code - GS 1004
Linear Weight - 0.678 kg/m



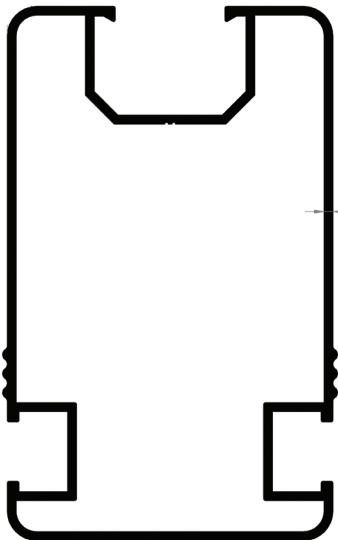
Profile Code - SM 5505
Linear Weight - 0.399 kg/m



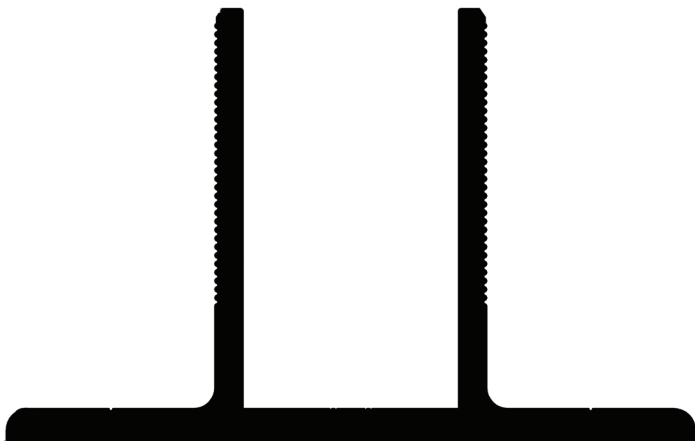
Profile Code - GS 1002
Linear Weight - 1.160 kg/m



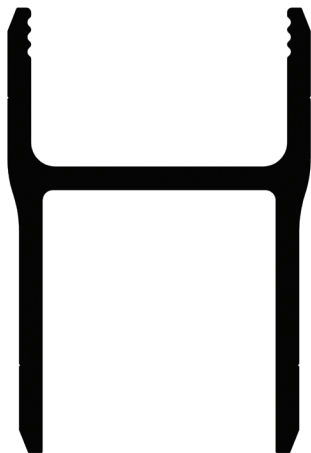
25,00
Profile Code - GS 1005
Linear Weight - 0.389 kg/m



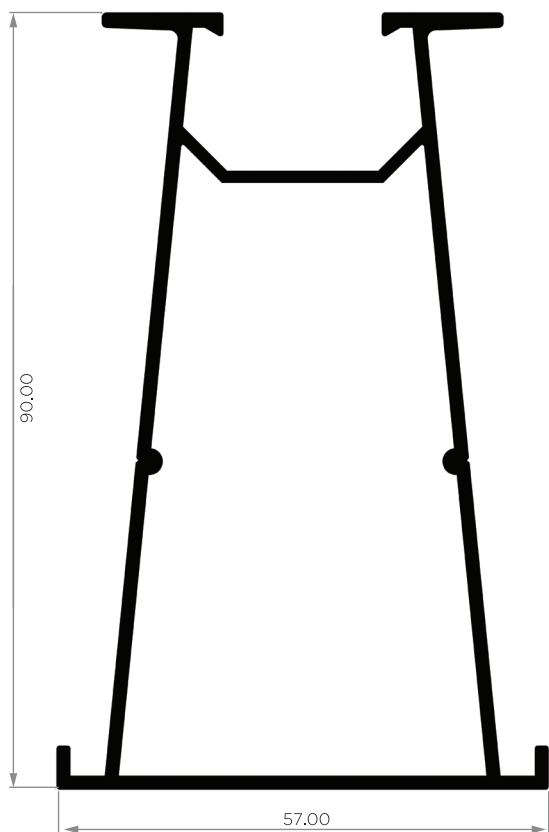
Profile Code - GS 1007
Linear Weight - 1.509 kg/m



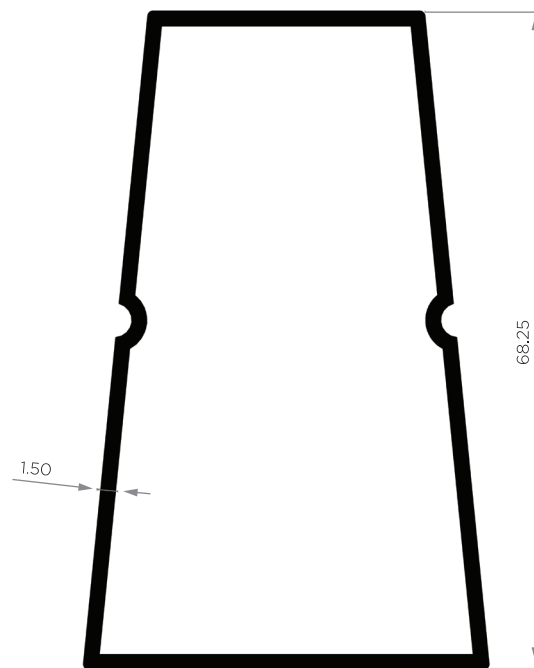
Profile Code - GS 1001
Linear Weight - 6.351 kg/m



Profile Code - GS 1006
Linear Weight - 3.239 kg/m



Profile Code - GS 1010
Linear Weight - 1.238 kg/m



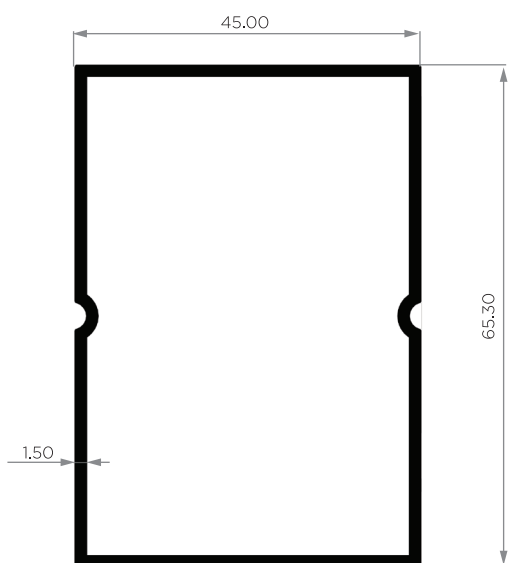
Profile Code - GS 1011
Linear Weight - 0.827 kg/m



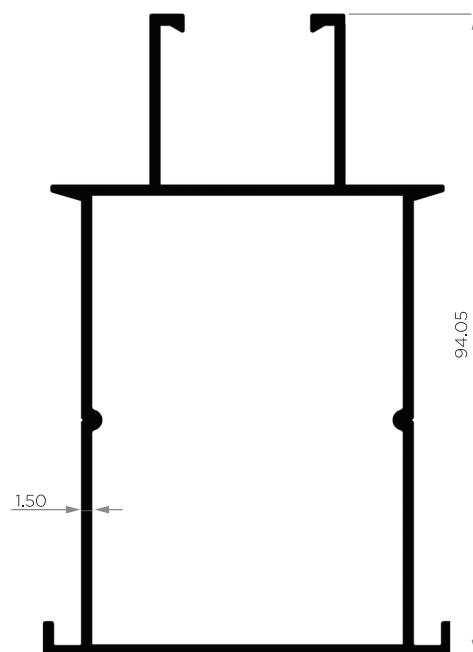
Profile Code - SM 5506
Linear Weight - 0.284 kg/m



Profile Code - SM 5505
Linear Weight - 0.399 kg/m



Profile Code - GS 1009
Linear Weight - 0.879 kg/m



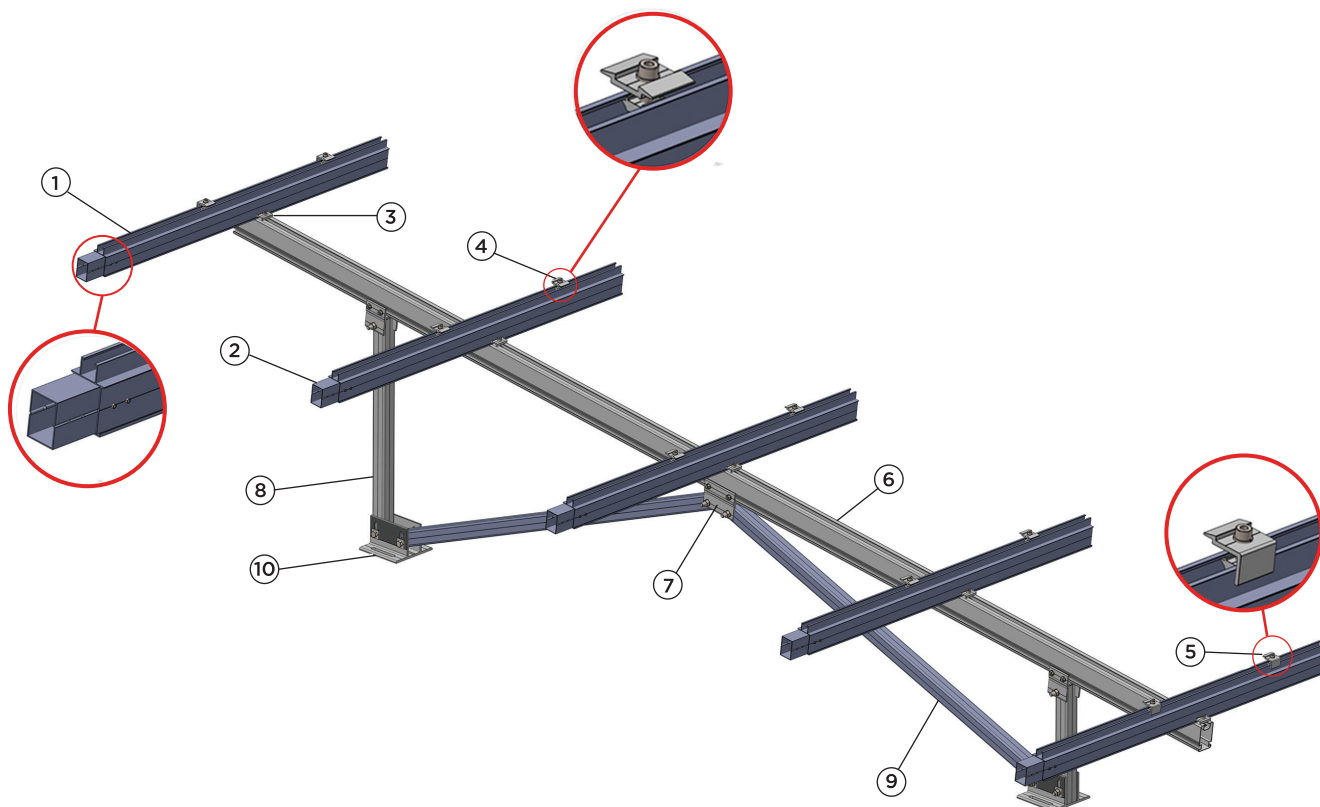
Profile Code - GS 1008
Linear Weight - 1.314 kg/m

OVERVIEW OF LANDSCAPE GROUND MOUNTING SYSTEM

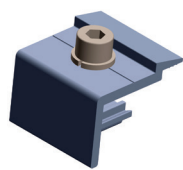
TECHNICAL INFORMATION

PV module orientation	-	Landscape	01.	SGM Landscape Purlin
Installation site	-	Open field	02.	SGM Landscape Purlin Connector
Wind load	-	Up to 60m/s	03.	SGM Rail Clamp
Applicable module	-	With frame/frame less	04.	T Clamp
Foundation	-	Concrete/Ground screw	05.	Angle Clamp
Structural material	-	6005-T5	06.	SGM Rafter
Surface finish	-	Natural Anodized (customizable)	07.	SGM Top Base
Fastener material	-	Stainless Steel 304	08.	SGM Front Leg
Main material	-	100% Anodized Aluminum	09.	SGM Diagonal Beam
Warranty	-	Ten years warranty	10.	SGM Bottom Base

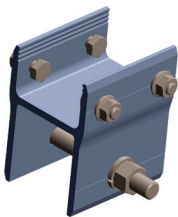
LANDSCAPE



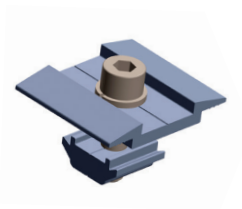
COMPONENT DETAILS



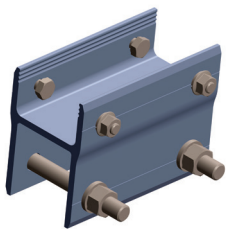
Angle Clamp
Bolt 25mm - 50mm



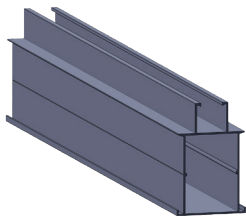
SGM Holding Top Base
Length - 80mm
M8x25 - 4 pcs
M12x90 - 1 pc



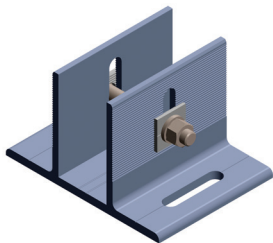
T Clamp
Bolt 25mm - 50mm



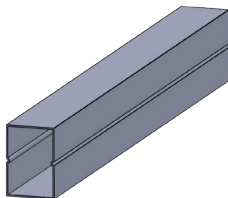
SGM Holding Top Base
Length - 130mm
M8x25 - 4 pcs
M12x90 - 2 pcs



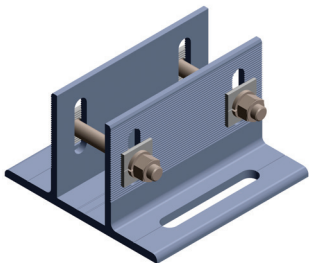
SGM Landscape Purlin
Length - Custom



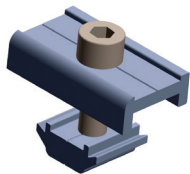
SGM Bottom Base
Foot Piece - Single
Length - 120mm
M12x90 - 1pc
Aluminium Wave Washer - 2pcs



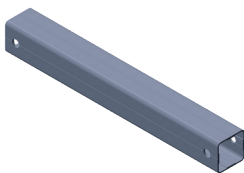
SGM Landscape Purlin Connector
Length - 150mm
M6.3x25mm - 8 pcs



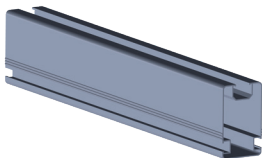
SGM Bottom Base
Foot Piece - Double
Length - 160mm
M12x90 - 2pcs
Aluminium Wave Washer - 4pcs



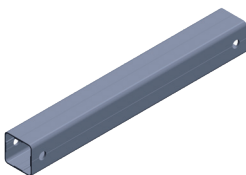
SGM Railing Clamp
Bolt M8x25



SGM Diagonal Beam
Length - Custom



Rafter
Length - Custom



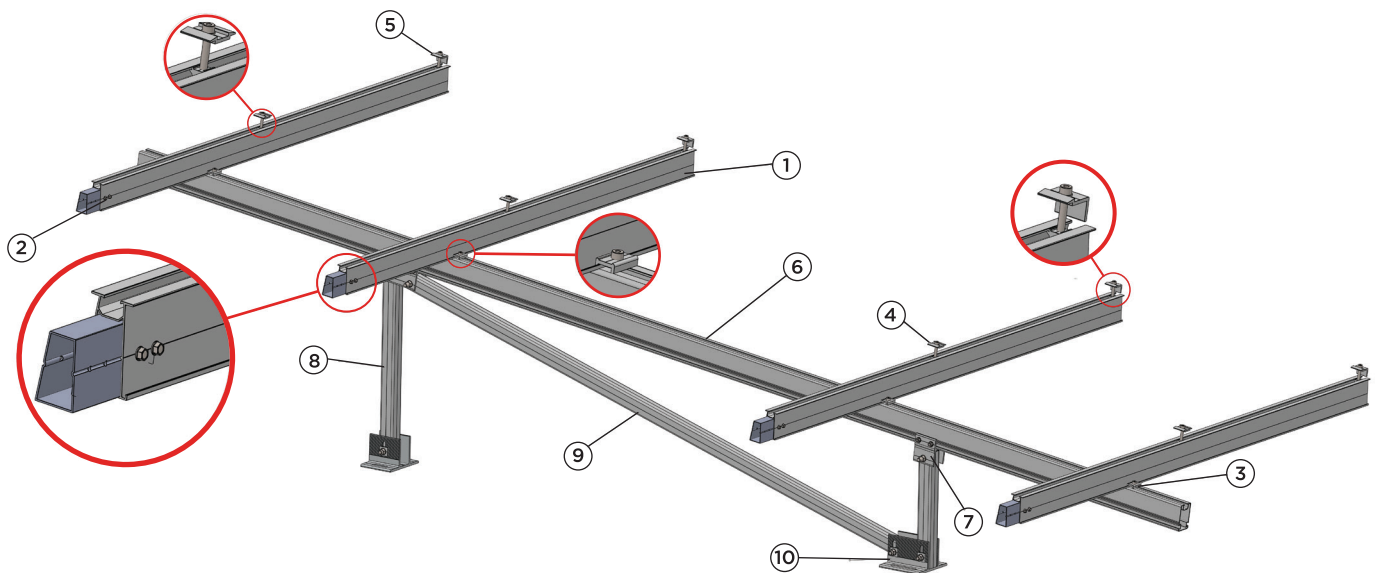
SGM Leg (Front/back)
Length - Custom

OVERVIEW OF PORTRAIT GROUND MOUNTING SYSTEM

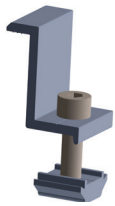
TECHNICAL INFORMATION

»» PV module orientation	-	Portrait	01. SGM Portrait Purlin
»» Installation site	-	Open field	02. SGM Portrait Purlin Connector
»» Wind load	-	Up to 60m/s	03. SGM Rail Clamp
»» Applicable module	-	With frame/frame less	04. T Clamp
»» Foundation	-	Concrete/Ground screw	05. Angle Clamp
»» Structural material	-	6005-T5	06. SGM Rafter
»» Surface finish	-	Natural Anodized (customizable)	07. SGM Holding Top Base
»» Main material	-	100% Anodized Aluminum	08. SGM Front Leg
»» Warranty	-	Ten years warranty	09. SGM Diagonal Beam
			10. SGM Bottom Base

PORTRAIT

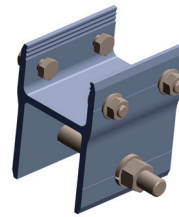


COMPONENT DETAILS



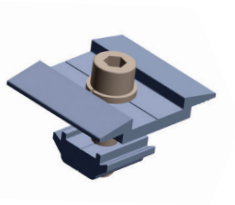
Angle Clamp

Bolt 25mm - 50mm



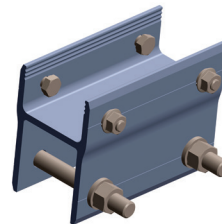
SGM Holding Top Base

Length - 80mm
M8x25 - 4 pcs
M12x90 - 1 pc



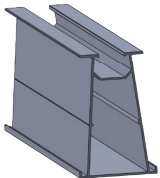
T Clamp

Bolt 25mm - 50mm



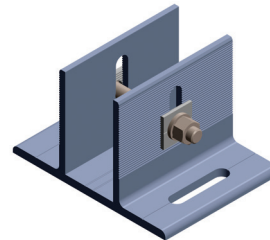
SGM Holding Top Base

Length - 130mm
M8x25 - 4 pcs
M12x90 - 2 pcs



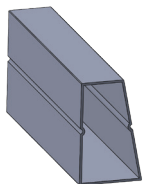
SGM Portrait Purlin

Length - Custom



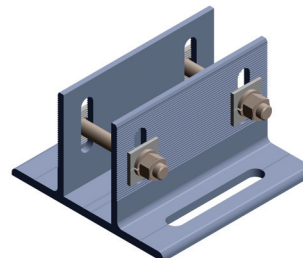
SGM Bottom Base

Foot Piece - Single
Length - 120mm
M12x90 - 1pc
Aluminium Wave Washer - 2pcs



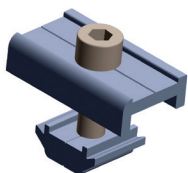
SGM Portrait Purlin Connector

Length - 150mm
M6.3x25mm - 8 pcs



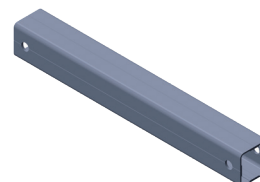
SGM Bottom Base

Foot Piece - Double
Length - 160mm
M12x90 - 2pcs
Aluminium Wave Washer - 4pcs



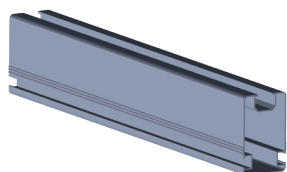
SGM Railing Clamp

Bolt M8x25



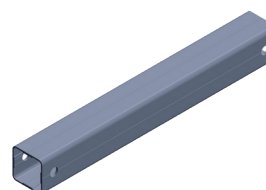
SGM Diagonal Beam

Length - Custom



Rafter

Length - Custom



SGM Leg (Front/back)

Length - Custom



INSTALLATION MANUAL

SAFETY INSTRUCTIONS

- » Use of Personal Protective equipment (PPE) during the installation is a must.
- » Keep the presence of second party to help in the event of an accident throughout the installation process.
- » Do not remove any safety devices.
- » Keep a copy of the installation guide throughout the installation process.
- » Comply with the local safety regulations.
- » Intended to be used by individuals with sufficient technical skills for the task.
- » Installer should have the knowledge of the use of hand tools, Power tools and measuring devices.
- » Keep the precaution notes to assist in the assembly process to keep the attention for certain operations during the assembly process which could cause serious personal injuries or/and damage the components.

GENERAL INSTRUCTIONS

- » Make sure the installation instructions and safety instruction are read and understood by the installer.
- » Make sure the installation is carried out by the personals with specialist technical knowledge and basics of mechanical engineering.
- » Do not remove any safety devices.
- » Keep a copy of the installation guide throughout the installation process.
- » Comply with the local safety regulations.
- » Intended to be used by individuals with sufficient technical skills for the task.
- » Installer should have the knowledge of the use of hand tools, Power tools and measuring devices.
- » Keep the precaution notes to assist in the assembly process to keep the attention for certain operations during the assembly process which could cause serious personal injuries or/and damage the components.

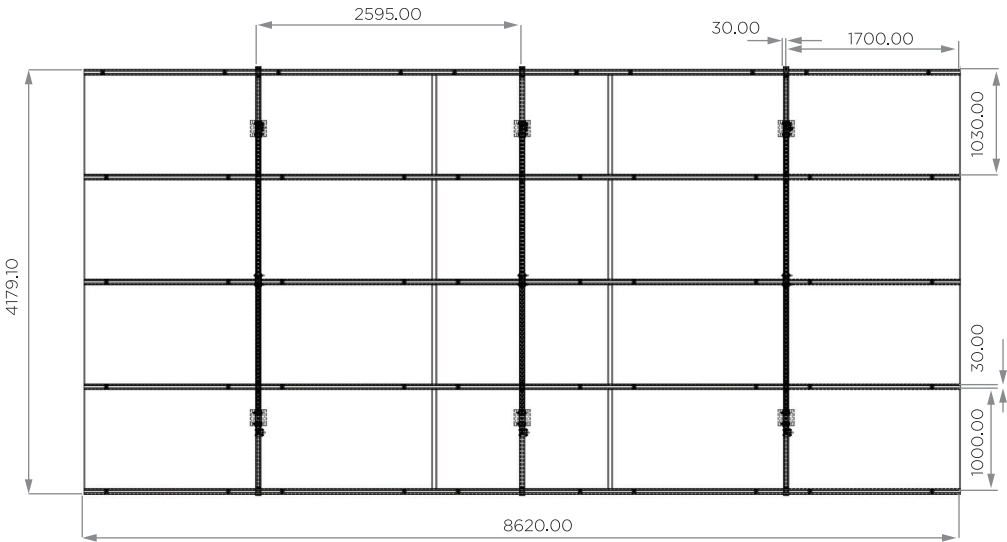
WARRANTY

Swisstek provides a warranty of 10 years for the service life for all Aluminium materials used.

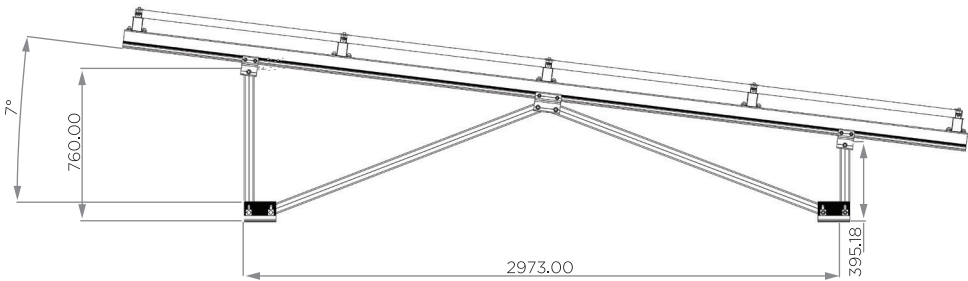
LAYOUT PLANNING

A general layout drawing is provided for all the systems before delivery.

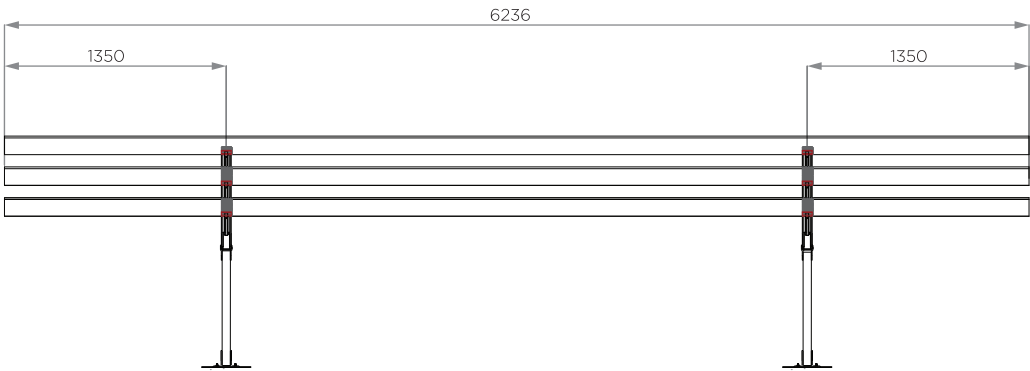
Following drawings shows an example of the layout drawing for typical landscape PV array.



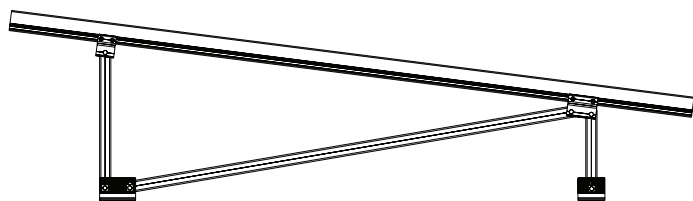
Landscape front view solar panel



Landscape front side solar panel

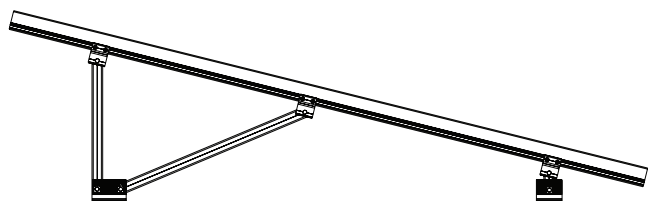


INSTALLATION TYPES



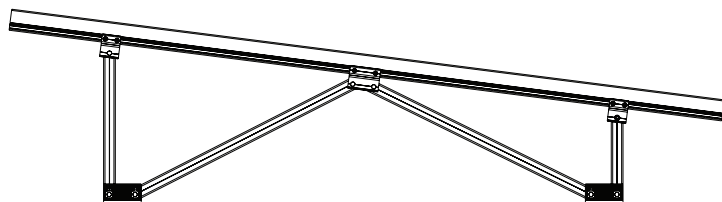
'N' Type

Fit for over 600 mm



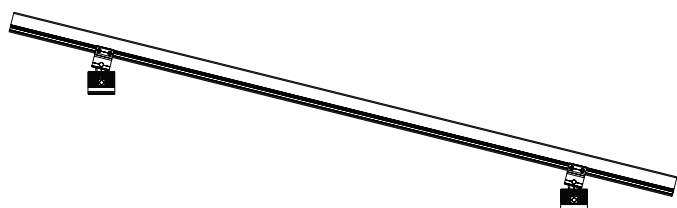
'A' Type

Fit for height of 300 mm less



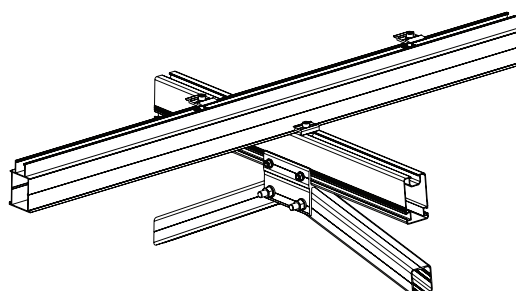
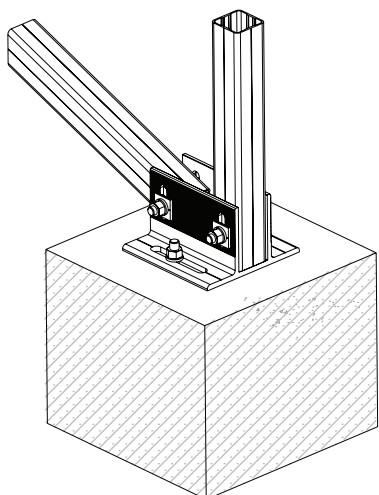
'W' Type

Fit for long placement



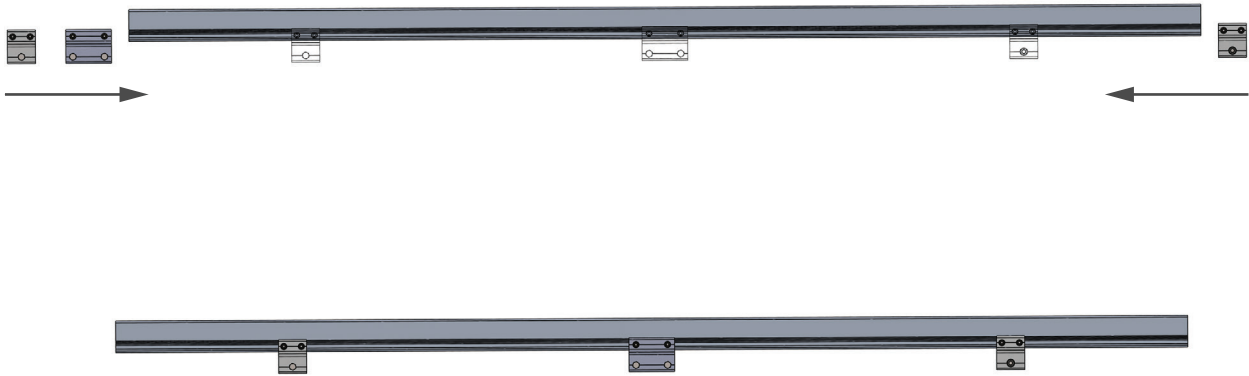
'Non-foot' Type

Fit for hill



INSTALLATION STEPS

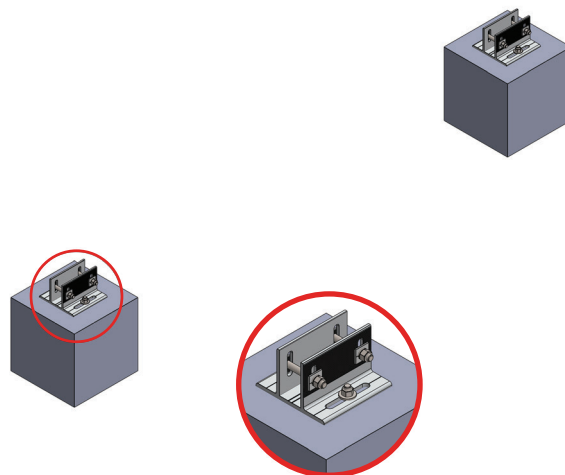
Step 1 – Insert SGM holding top base (80mm and/or 130mm) in to the rail of SGM rafter.



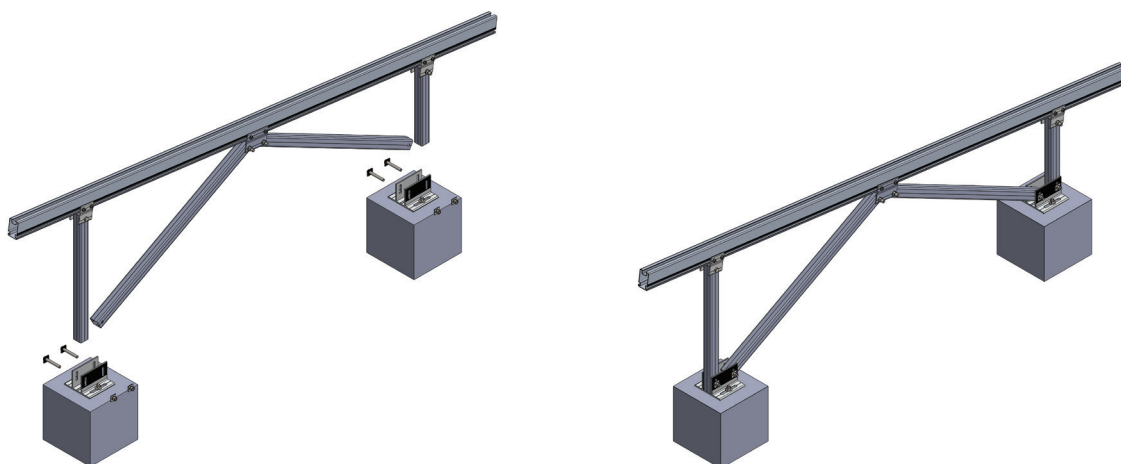
Step 2 – Fix the legs and SGM diagonal beam to the SGM holding top base.
Adjust the SGM holding top bases according to the given measurements along the rafter.



Step 3 - Fix the SGM bottom base on the foundation according to the given drawing measurements.

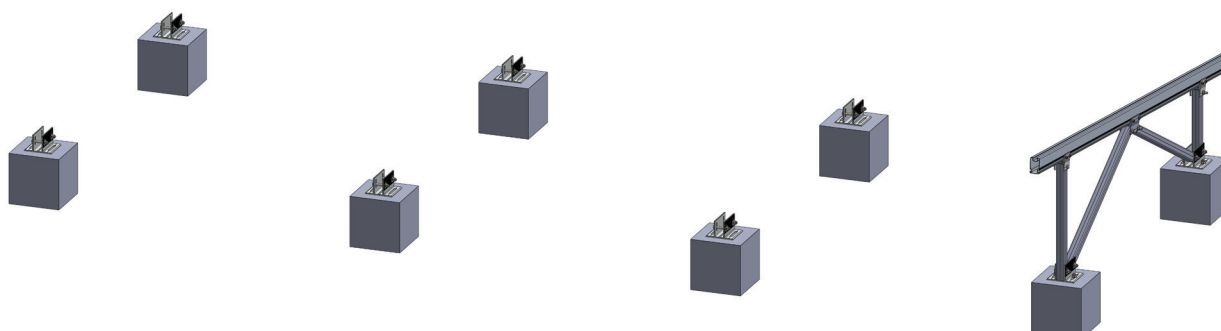


Step 4 - Fix the assembled SGM rafter assembly on the SGM bottom base.



Step 5 - Crosscheck the dimensions with the drawings.

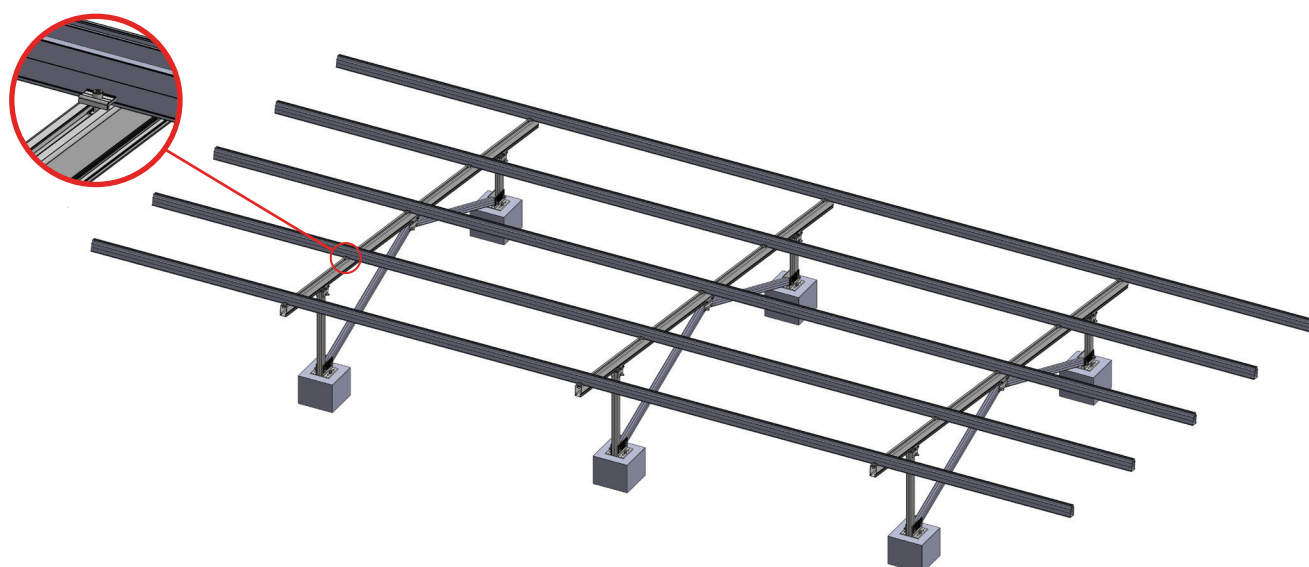
Step 6 - If the measurements are correct repeat Step 3. along the foundation.



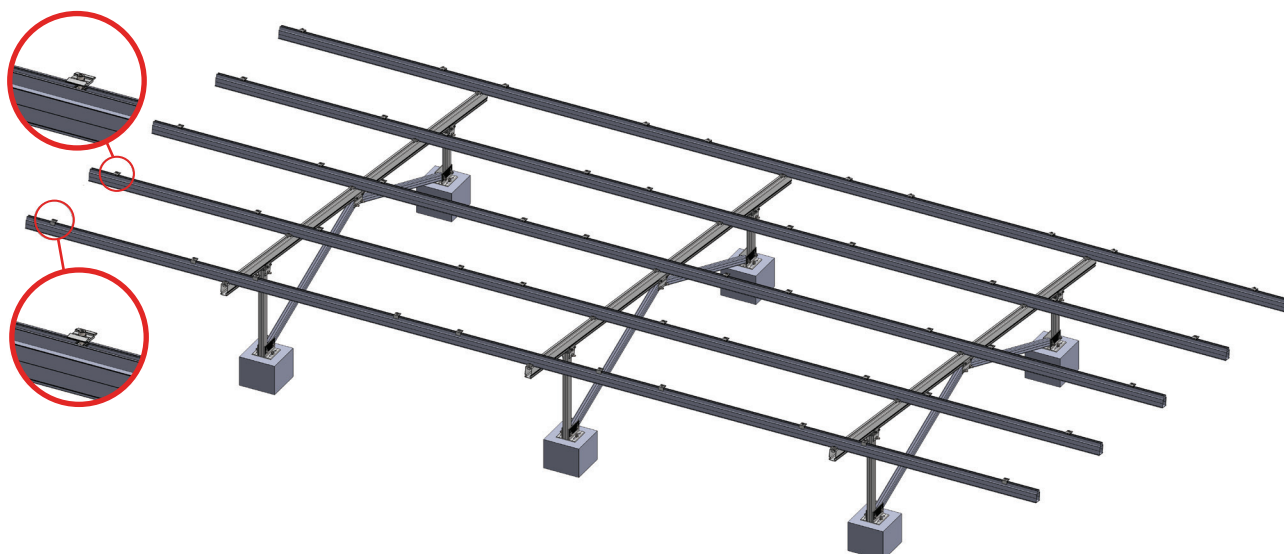
Step 7 - Repeat Step 4



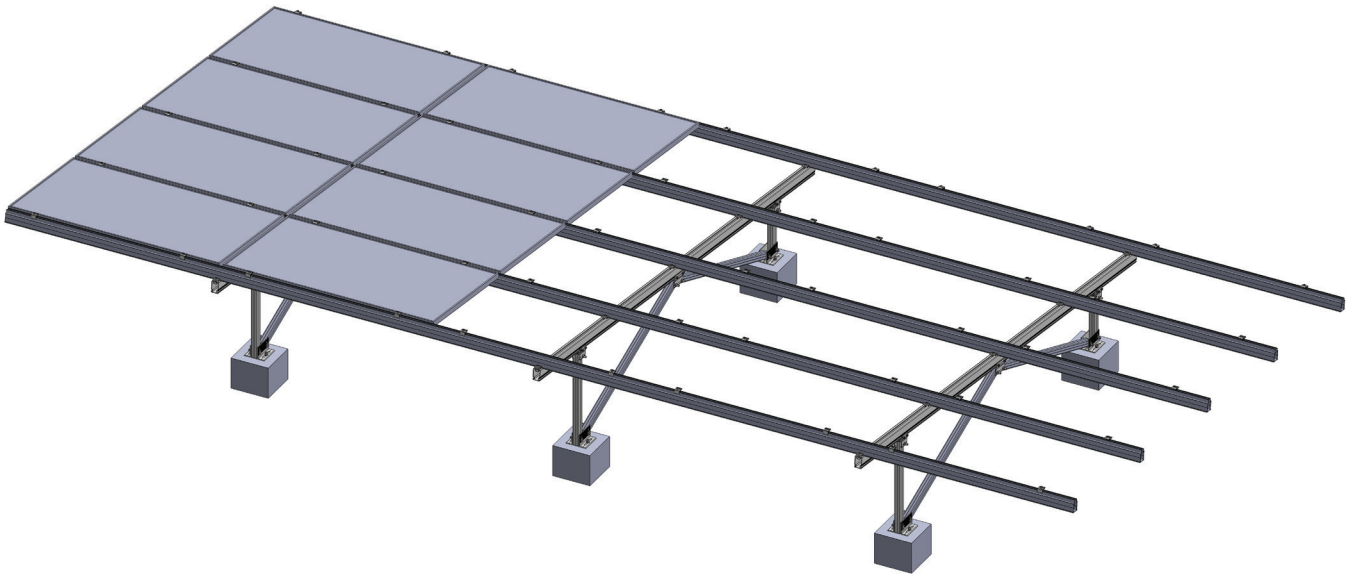
Step 8 - Place SGM purlins over the rafters according to the given measurements.



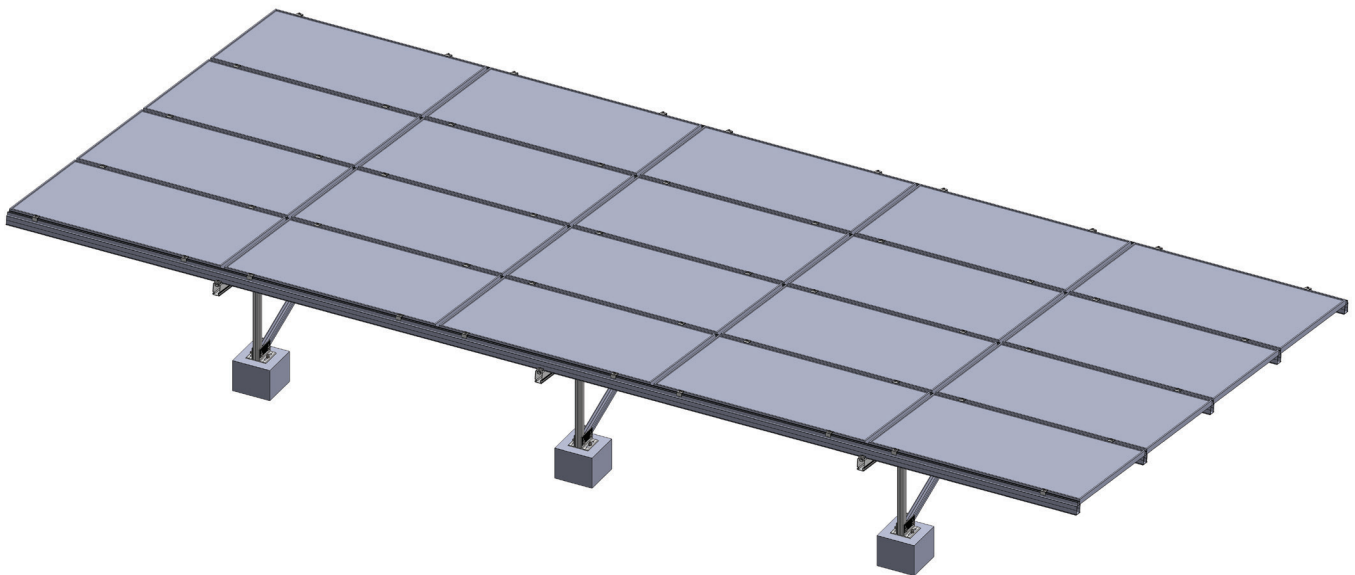
Step 9 - Insert SGM angle clamps in the edge purlins and SGM T clamps in the middle purlins.



Step 10 - Place the Solar panel on the purlins and fix it with SGM angle clamp and/or SGM T clamp.

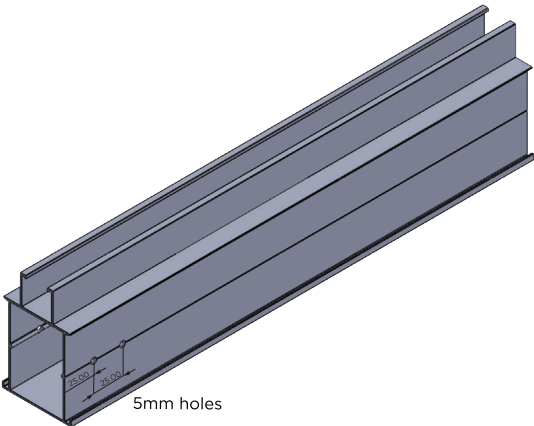


Step 11 - Repeat the step until structure is covered with solar panels.

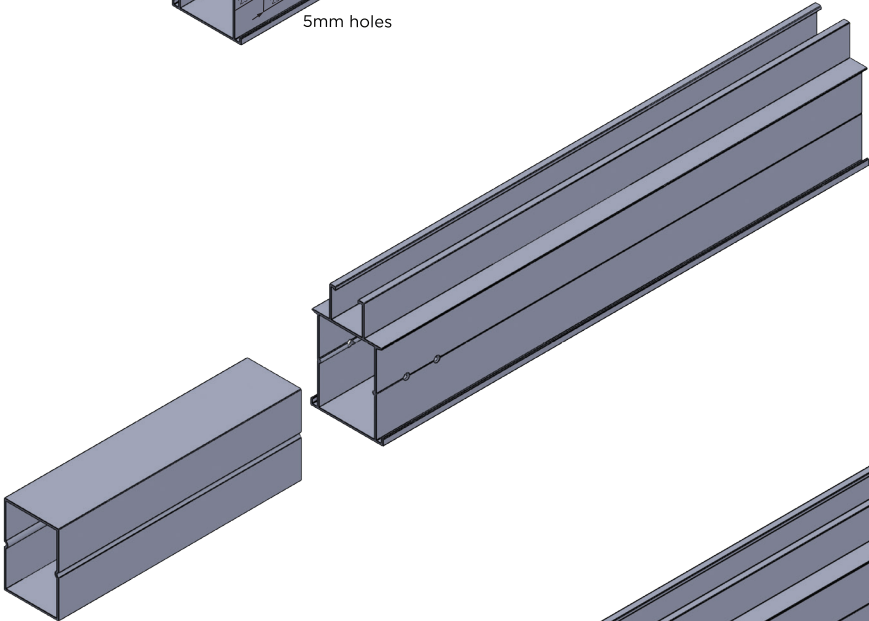


CONNECTION OF TWO PURLINS

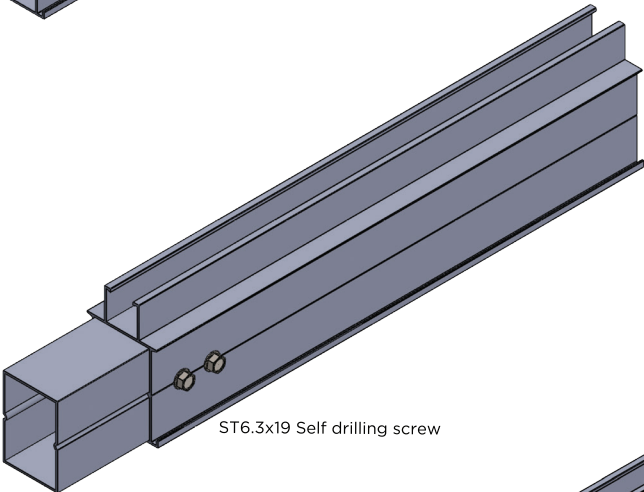
STEP 1



STEP 2



STEP 3



STEP 4

